



CONRAD[®]
SEOUL

YEUIDO DISTRICT



HanGang Park



HanGang Cruise



IFC mall



The Hyundai Seoul



Seoul Dal



National Assembly Building

Located in the heart of Seoul, Yeouido is a distinguished district where business, culture, and leisure come together.

With scenic riverside parks, iconic landmarks like the National Assembly, and sophisticated shopping destinations, Yeouido offers a refined urban experience.

Its exceptional accessibility and prime location make it the perfect choice for travelers seeking both business efficiency and luxurious relaxation.



Experience modern luxury at Conrad Seoul! 434 picturesque views of the Han River & City skyline's rooms, each equipped with a Smart in-room multimedia system. 2,562 sqm of events space consisted of two ballrooms and the studios.

Attractive 6 restaurants offer a diverse experience with world delicacies.

A modern-style spa and fitness club, complete with golf facilities, help you maintain your wellness routine throughout your stay. As a 2024 Forbes Travel Guide 4 Star Hotels, you can experience smart luxury and unparalleled service at Conrad Seoul.

Location Merits

AIRPORT

-50 minutes from Incheon International Airport (55 km)

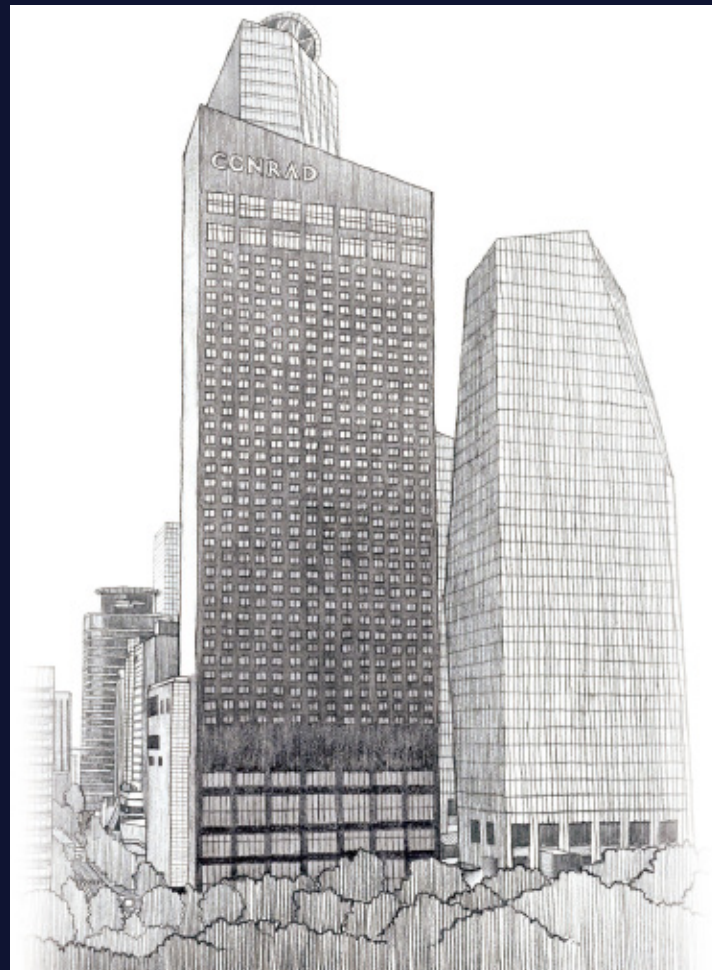
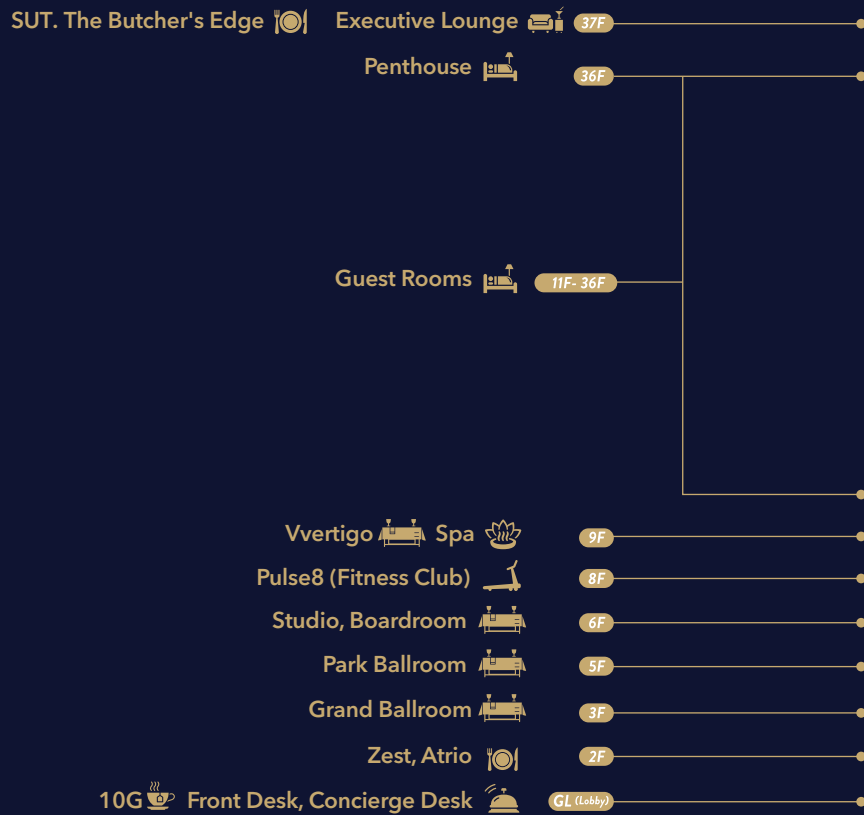
-20 minutes from Gimpo International Airport (20 km)

SUBWAY STATION

*10 minutes walking distance to Two subway lines (Line 5 & Line 9)

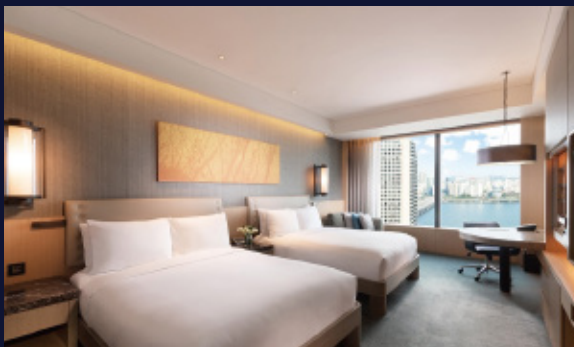


FLOOR PLAN

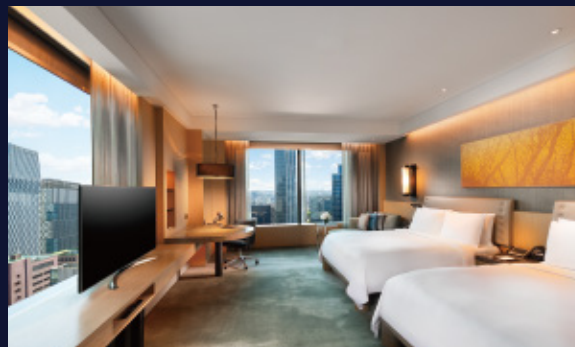


ROOMS

434 luxurious rooms offer breathtaking views, including the Han River and Seoul skyline. Room offers comfortable spaces to work & relax, high-speed internet and entertainment, luxury bathrooms with luxury bath amenities, and 24-hour room service.



Deluxe Queen



Queen Corner Premium



Premium River View King



Executive Lounge

Breakfast : Monday - Sunday | 6:30 AM - 10:30 AM
Afternoon Tea: Monday - Sunday | 2:00 PM - 4:00 PM
Evening Cocktails:
 Monday - Friday | 5:00 PM - 8:00 PM
 Saturday - Sunday, Public Holidays | 4:30 PM - 7:30 PM

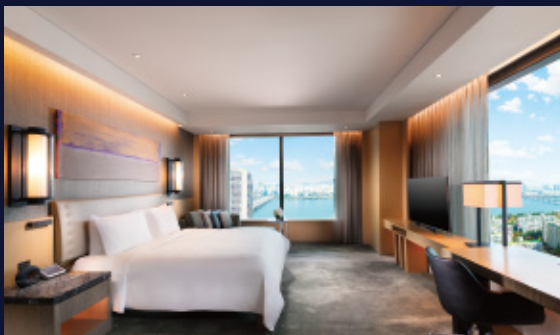
Room Type	Bed Type	NO. ROOMS	Total	Size
Deluxe	King	120	167	48m ²
	Queen(Twin)	47		
Premium	King	99	139	48m ²
	Queen(Twin)	40		
Corner Premium	Queen(Twin)	22	22	51m ²
Executive	King	36	56	48m ²
	Queen(Twin)	20		
Total		384		

- * Deluxe room in Conrad Seoul is the largest of its kind in Seoul
- * Luxury bath amenities from 'Byredo'.
- * EXECUTIVE LOUNGE is a special space exclusively for guests of our executive rooms.

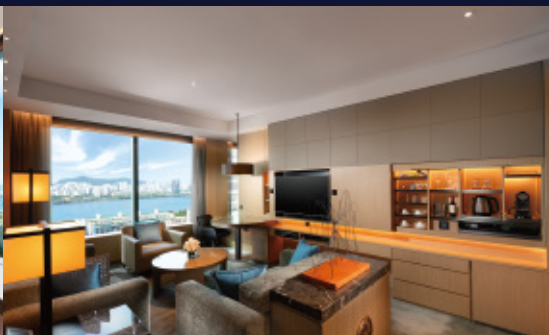
The Executive Lounge(EFL), located on the highest floor of Conrad Seoul (37th), offers panoramic views of the Han River and city skyline, a private exclusive buffet breakfast and tea & drinks all day long. Enjoy the evening session with cocktails and select wines, liquor, finger food, and snacks.

ROOMS

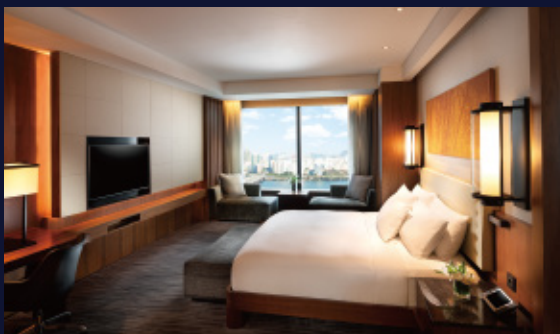
Suites offer enhanced with luxe bathrooms, a deep-soaking tub, and a separate glass-enclosed shower. Our collection of premium suites include Corner Suites, Conrad Suites, and one Penthouse Suite.



Corner Suite



Penthouse



Conrad Suite



Room Type	Bed Type	NO. ROOMS	Total	Size
Deluxe Corner Suite		23		
Premium Corner Suite	King	16	47	96m ²
Executive Corner Suite		8		
Conrad Suite	King	2	2	144m ²
Penthouse	King	1	1	288m ²
Total			50	



Accessible Room (King Bed & Queen Beds)

Designed for guests requiring additional assistance, with a modified accessible bathroom offering grab bars, a roll-in shower and height adjustable showerhead ensure ease of use. Emergency alert system is equipped with visual and auditory alerts for enhanced safety.

Connecting Room

Perfect for families or groups seeking extra space and convenience during stay. These thoughtfully designed accommodations allow you to enjoy both privacy and togetherness. (27 connecting rooms available in different room type configurations)



Pet Friendly Room

Welcome to our inviting pet-friendly room, designed to ensure both you and your furry companion feel right at home. Spacious and stylish accommodation provides all the comforts including Cozy pet bed, food and water bowls and a welcome treat to make them feel pampered.

*Please contact our reservation team (02-6137-7777) in advance for booking these kinds of rooms.

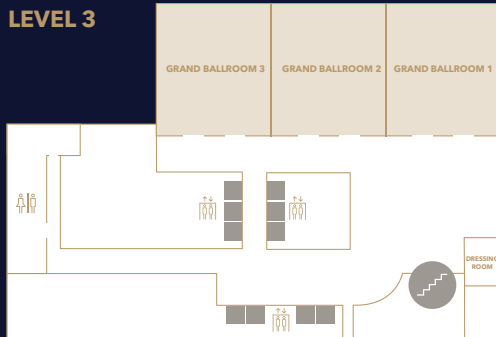
BANQUET CHART

ROOM NAME	ROOM DIMENSIONS (Length x Width x Height)			AREA	CAPACITIES					
	Ft / M			Sq. Ft / Sqm	Banquet	Theater	Classroom	Boardroom	U-Shape	
Level 3	Grand Ballroom 1	56.9 / 17.4	59.7 / 18.2	23.0 / 7.0	3,396.9 / 316.7	160	252	168	36	54
	Grand Ballroom 2	56.2 / 17.1	59.7 / 18.2	23.0 / 7.0	3,355.1 / 311.2	160	252	168	36	54
	Grand Ballroom 3	56.5 / 17.2	59.7 / 18.2	23.0 / 7.0	3,373.1 / 313.0	160	252	168	36	54
	Grand Ballroom 1 + 2 + 3	169.6 / 51.7	59.7 / 18.2	23.0 / 7.0	10,125.1 / 940.9	600	756	504	138	159
Level 5	Park Ballroom 1	33.1 / 10.1	54.9 / 16.7	16.1 / 4.9	1,871.2 / 168.7	60	108	72	30	39
	Park Ballroom 2	32.8 / 10.0	54.9 / 16.7	16.1 / 4.9	1,800.7 / 167.0	60	108	72	30	39
	Park Ballroom 3	32.8 / 10.0	54.9 / 16.7	16.1 / 4.9	1,800.7 / 167.0	60	108	72	30	39
	Park Ballroom 1 + 2 + 3	98.8 / 30.1	54.9 / 16.7	16.1 / 4.9	5,418.6 / 502.7	280	441	294	66	84
	Park Studio 1	29.6 / 9.0	39.0 / 11.9	19.0 / 5.8	1,154.4 / 107.1	40	72	48	18	27
	Park Studio 2	29.6 / 5.9	43.2 / 13.1	9.8 / 3.0	8446.6 / 78.4	50	72	36	30	36
Level 6	Studio 1	29.2 / 8.9	35.1 / 10.7	14.1 / 4.3	1,204.9 / 95.2	40	72	48	24	30
	Studio 2	29.5 / 9.0	35.1 / 10.7	14.1 / 4.3	1,035.5 / 96.3	40	72	48	24	30
	Studio 3	29.2 / 8.9	35.1 / 10.7	14.1 / 4.3	1,204.9 / 95.2	40	72	48	24	30
	Studio 1 + 2 + 3	88.0 / 26.8	35.1 / 10.7	14.1 / 4.3	3,088.8 / 286.8	170	234	156	66	78
	Studio 4	40.6 / 12.4	39.4 / 12.0	14.1 / 3.4	1,599.6 / 148.8	60	112	75	24	36
	Studio 5	27.0 / 8.2	39.4 / 12.0	12.1 / 3.7	1,063.8 / 98.4	40	67	45	24	30
	Studio 6	23.6 / 7.2	39.4 / 12.0	12.1 / 3.7	929.8 / 86.4	30	45	30	24	27
	Studio 7	26.3 / 8.0	39.4 / 12.0	12.1 / 3.7	1,036.2 / 96.0	40	67	45	24	30
	Studio 8	25.5 / 7.8	25.1 / 7.6	20.3 / 6.2	640.1 / 59.3	20	40	27	12	18
	Studio 9	27.6 / 8.4	25.1 / 7.6	20.3 / 6.2	692.8 / 63.8	20	40	27	12	18
	Studio 10	29.5 / 9.0	25.1 / 7.6	20.3 / 6.2	740.5 / 68.4	20	40	27	12	18
	Studio 8 + 9 + 10	82.6 / 25.2	25.1 / 7.6	20.3 / 6.2	2,073.3 / 191.5	70	108	72	60	63
	Board Room	43.6 / 13.3	25.6 / 7.8	12.1 / 3.7	1,116.2 / 103.7	-	-	-	-	18
Level 9	Vvertigo	54.1 / 16.5	20.7 / 6.3	13.5 / 4.1	1118.9 / 104	60	-	63	42	42

GRAND BALLROOM

Grand Ballroom is the largest banquet hall in Conrad Seoul with the perfect atmosphere for up to 1,200 people. It features a 7m-high ceiling with natural lighting, as well as large LED screen (14.4m x 4.5m) on the side walls.

FLOOR GUIDE
LEVEL 3



ROOM SIZE 51.7 x 18.2 x 7.0 (m)

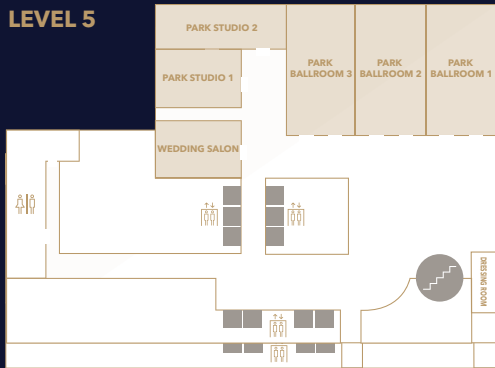
LED SIZE 14.4 x 4.5 (m)



PARK BALLROOM

The Park Ballroom is a large banquet hall that can accommodate up to 700 people. It has a 5m-high ceiling and natural lighting, and large LED screen (9.5m x 3.5m) on the side walls.

FLOOR GUIDE
LEVEL 5



ROOM SIZE 30.1 x 16.7 x 4.9 (m)

LED SIZE 9.5 x 3.5 (m)



STUDIO & BOARDROOM

STUDIO

There are 10 studios designed for smaller and medium-sized banquets, with built-in screens and projectors – making these studios perfect for hybrid meetings and video conferencing.

FLOOR GUIDE
LEVEL 6



BOARD ROOM

The boardroom provides a complete online and offline conference system with a 98-inch HD monitor and a speaker-tracked microphone system for video conferencing.



VVERTIGO

With its sophisticated and atmospheric ambiance, provides an exclusive standalone venue suitable for a wide range of events, including corporate functions, family gatherings, private parties, and wedding after-parties.

FLOOR GUIDE
LEVEL 9



INDOOR 16.5 X 6.3 X 4.1 (m)

OUTDOOR 23 X 15 X 0 (m)



WEDDINGS

Conrad Wedding lovingly crafts the most beautiful and brightest day of your life. Customized wedding styling services, professional wedding manager has years of experience and know-how, and each work of staffs all the elements design your special wedding day.

148.8 sqm Corner Studio Room with panoramic views

* Separated floor from the Wedding hall (Use the wedding studio as a Photo Zone)

* Studio 4



LED SCREEN

	GRADN BALLROOM	PARK BALLROOM
SIZE	51.7 x 18.2 x 7.0 (m)	30.1 x 16.7 x 4.9 (m)
LED SIZE	14.4 x 4.5 (m)	9.5 x 3.5 (m)

F&B OUTLET

Indulge in a culinary journey with our diverse dining options. Savor the vibrant flavors of our International cuisine of All-day-dining, Authentic taste of Italy where traditional recipes meet modern flair in a cozy, inviting atmosphere. The Lobby Cafe provides a cozy spot to sip coffee, enjoy light bites, or indulge in delicious pastries throughout the day.

ZEST



Type All Day Buffet

Max Seated Capacity 254 seats

ATRIO



Type Italian

Max Seated Capacity 103 seats

10G



Type Lounge Cafe

Max Seated Capacity 75 seats

F&B OUTLET

At the top of Conrad Seoul, experience a heightened world of modern luxury above the city skyline. SUT. The Butcher's Edge reveals the artistry of charcoal fire and aging with masterfully dry-aged, premium cuts presented through an elegant omakase-style journey paired with curated wines. Steps away, 37 Bar unfolds panoramic views, refined seasonal cocktails, and an exceptional selection of over 250 whiskies— together shaping a distinctly elevated dining and bar experience.

SUT. THE BUTCHER'S EDGE.



Type	Premium Steak House
Max Seated Capacity	66 seats (+ 8 seats for Omakase)

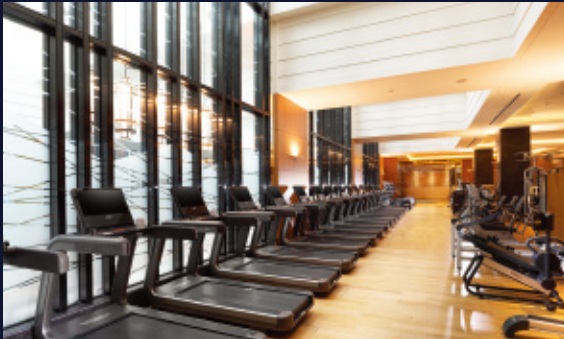
37BAR



Type	Premium Whiskey Bar
Max Seated Capacity	76 seats

PULSE 8

Wellness Centre with professional trainers and top-of-the-line exercise equipment, a 25m long (FINA World Swimming championships standard tracks) swimming pool all year round by natural sunlight, a Golf zone with seven individual practice ranges and putting zones and sauna with a comfortable sleeping area and lounge, and a café for healthy food.



DRAMA SHOOTING IN CONRAD SEOUL



TVN <Tears of Queen>
K-Drama



Location: Pent House



JTBC <King the Land>
K-Drama



Location: Boardroom

LOCALITY

IFC Mall



Experience about 110 casual brands, including global fashion brands, sports, beauty, dining, and cinema all in one, the IFC mall.

3min by walk
Connected with Conrad Seoul L1

The Hyundai Seoul



Experience Seoul's signature shopping landmark, The Hyundai Seoul. A premier hub for business, shopping, and leisure. It offers a variety of luxury brands, trendy pop-up stores, art exhibitions & artworks and fine dining.

5min by walk
Connected with Conrad Seoul L1

EVENTS



Yeouido International Fireworks



Yeouido Bamdokkaebi Night Market



Yeouido Cherry Blossom Festival

PLACE



Yeouido Seoul Dal



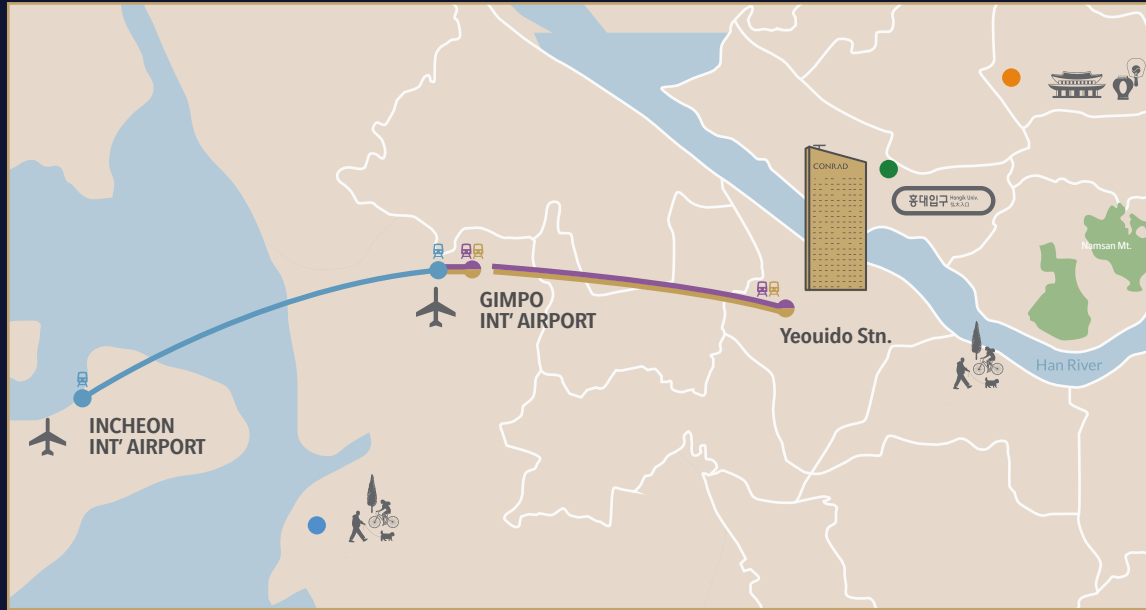
63 Building _The Centre Pompidou

*Opening date: In Oct 2026 (Photo from Paris, France)



Noryangjin Fish Market


SURROUNDING FACILITY



Gimpo International Airport (20km_ 20min by car)
Incheon International Airport (55km_50 min by car)

- **Hongik University Street**
(6.3km _15min by car)
Young street with collection of all kinds of store
- **Insadong**
(11km _25min by car)
Seoul's premier tourist destination
With traditional galleries, tea houses, and art studios, and shops perfect for travel souvenirs
- **Han River**
(1km_ 15min by walk)
Major river park in Yeouido, Seoul
- **Gyeongbokgung Palace**
(10km _25min by car)
Royal Palace in Joseon dynasty
2020 BTS Jimmy Fallon Show
- **Songdo Central Park**
First seawater park in the nation which provides visitors with various water activities including a water taxi, canoeing.

 **Airport rail road**

 **Subway line no.5**

 **Subway line no.9**

Experience luxury redefined in Conrad Seoul

CONRAD®
SEOUL